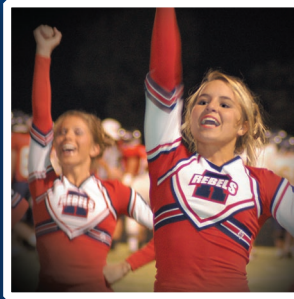


*“Now I praise you because you remember me in everything and hold firmly to the traditions,
just as I delivered them to you.” 1 Corinthians 11:2*

TIPTON-ROSEMARK ACADEMY

CONTINUING *the* TRADITION





A MESSAGE FROM THE HEADMASTER

Dear TRA Friends and Stakeholders:

As I was considering the right words for this important letter, I recalled this quote by Johann Wolfgang von Goethe:

*“**Whatever you can do or dream
you can, do it;
boldness has genius, power, and magic in it.**”*

This quote has great relevance for Tipton-Rosemark Academy because the story of TRA is inspired by such boldness. It began when a few families dreamed of the opportunity to educate their children in a Christian environment where the Bible could be taught and studied. Through their bold dreams, genius and magic became a reality when a small school sprang to life. Over the past forty years, TRA has successfully provided a quality education in a Christian environment to many children. However, this success would not have taken place without tremendous dedication, sacrifice and loyalty from many people. The life blood of this school has been and continues to be the support and involvement of its stakeholders.



In 1998 the TRA Board of Directors mapped out a long term strategic plan for the school. In 2000 TRA moved to make this plan a reality by launching the “Tradition of Excellence” capital campaign. The \$500,000 raised through this campaign was used to build a new middle school and a gymnasium. This endeavor has already proven to be a successful investment. TRA’s enrollment has steadily grown for the

past six years. Now, we are poised to continue our strategic plan for growth through the expansion of our lower school building and the construction of a new state-of-the-art high school. This construction will allow us to accommodate our budding early childhood program and the anticipated enrollment increase in elementary grades 1-5. It will also provide us an opportunity to better prepare our high school students for the challenges of the future. To complete this phase of the plan, we will need to raise a minimum of one million dollars to service the bonds that we have been issued for this construction.

TRA has experienced a wonderful tradition over the past 40 years, and now we are asking that you help us in “Continuing the Tradition” through your prayer and your financial contributions to this capital campaign. When you do so, please remember that this endeavor is much more than building buildings; it is about providing an opportunity for our children to get a quality education in a safe Christian environment. In the past, your dedication and support has paid sound dividends in the development of our greatest natural resource - our children. We pray that you continue to provide that support.

Please help us to realize our dream and to take a bold step toward securing the genius, power, and magic of a child’s mind. Thank you for your interest in TRA, your continued support, and your prayers in this very important endeavor.

*God Bless You All,
Mr. John Scott, Headmaster*

A TESTIMONIAL FROM THE GAREY FAMILY



Dear TRA Friends and Friends:

About 25 years ago when Melia and I started our family, we established some priorities for our children. First and foremost was the importance of their relationship with Jesus Christ. Secondly, there was the importance of their education. Both of these priorities for our family and our children would require a great deal of sacrifice and commitment. Their relationships with Christ would greatly be dependent on choices they would make for themselves. However, a top quality education would be dependent on choices we would make for them as their parents. We wanted a school with a college preparatory curriculum and high achievement standards, a school where we could be involved as parents, and a school where the faculty and staff loved the students as much as they loved teaching yet expected nothing less than excellence. We were looking for “a quality education in a Christian environment”. Tipton-Rosemark Academy has proven to be the place.

Our association with TRA goes back nearly 20 years. Our oldest daughter, Leah, now 24, attended Rosemark through the eighth grade. Our son, Will, 21, and second daughter, Natalie, 19, both experienced a full 13 years at TRA beginning in kindergarten and graduating several years ago. At 16, our youngest daughter Hannah, will graduate with the class of 2009 and will have also been at the school since kindergarten. All four of them are a blessing to us and God has always provided us with the wisdom and opportunity to make good choices for them regarding their education. We are very proud of each of them and thankful for the impact that the TRA environment has had on their lives. We feel that the “family” atmosphere that exists at Tipton-Rosemark can be equaled nowhere.

In addition to the family and Christian atmosphere at TRA, there is the bonus of college preparedness. Now that three of our four children have either graduated from college or are still attending

college, we realize how well the faculty and curriculum at Rosemark “got them ready”. We have observed that it was their background from Tipton-Rosemark that provided them opportunities that they might not have gotten otherwise. And it has not all been about the classroom. Our children’s ability to make good decisions outside the classroom has also been a result of their TRA nurturing.

Another vital component of a child’s development is parental involvement. Tipton-Rosemark Academy needs and encourages your involvement, whether you are a parent, grandparent, graduate, or simply a supporter of the school and the community. If your child is in elementary, middle, or high school, there are numerous ways to participate in your child’s TRA experience and we encourage you to take advantage of every opportunity.

Finally, we encourage each supporter to giving generously to this year’s Capital Campaign. Your contribution will allow Tipton-Rosemark Academy to continue to expand its facilities and programs for the benefit of our children and grandchildren, and continue to provide “a quality education in a Christian environment” for generations to come.



THE GAREY FAMILY

Left to right: Natalie ('05), Hannah ('09), Will ('03), Melia, Bart and Leah.

Bart and Melia Garey

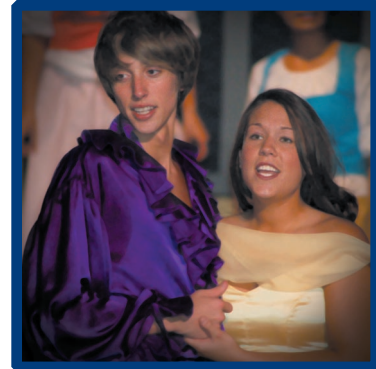
CONTINUING the TRADITION

*T*ipton-Rosemark Academy celebrated its 40th Anniversary in 2005 with a record of continued success in offering our community a quality education in a Christian environment. Our community is vastly growing which, in turn, means that TRA is growing.

The need for fund-raising has been precipitated by a number of factors including the continued growth of the school, a need to improve and enhance our facilities, and an emphasis on technology.

Continuing the Tradition: TRA's new capital campaign is one of the largest and most important undertakings in the school's history. Phase III of TRA's master plan will accomplish an elementary expansion, new high school building, and technological enhancements throughout the school. In order to complete Phase III of the master plan successfully, TRA will need an additional \$1 million in funding to service the bonds that have been issued to our academy. This is no small feat and will take the time, patience and gifts of so many of Tipton-Rosemark Academy's families, alumni, and friends.

Tipton-Rosemark Academy invites you to invest in the future of our children. Your leadership gift will challenge others to join this vital effort for TRA.



ACADEMIC AREAS



Classrooms: The 12,000 square foot **elementary expansion** will contain 12 classrooms, which will replace the existing portables, and add rooms for special classes such as Art and Bible. The 42,000 square foot **new high school** will contain 12 general classrooms, containing 700 square feet each. It is our goal for all classrooms to be equipped with computer work stations for the teachers, including laptops, LCD monitors, and screens.



Science Laboratories: The two state-of-the-art science laboratories will be equipped with fixtures selected by TRA's science teachers. Each science laboratory will contain approximately 1,000 square feet of space and will offer additional storage and office spaces.



Technology Center: The technology center will contain approximately 800 square feet of space. The entire new facility will provide TRA with wireless internet service. In addition, TRA's computer lab will be hard-wired for internet access.

AUXILIARY AREAS



Cafeteria/Multi-Purpose Room: The 9200 square foot cafeteria will accommodate all TRA students. The cafeteria will also serve as a multi-purpose room useful not only to feed the growing number of students we have, but also for athletics, recreation, large gatherings, and programs. Instead of traditional flooring, this multi-purpose room will have

FACILITIES INFORMATION

new indoor sports rubber flooring. The special sports flooring will allow TRA to easily transition between a volleyball court, basketball court, or indoor football practice facility.



Library: The heart of any school is its Library. In the proposed new high school facility, the library of approximately 3000 square feet will contain areas for books and printed material, other media, reading areas, and sufficient computer access to enable the facility to be a well-used hub of student learning exclusively for our students and faculty.



College & Career Center: TRA has 97% of its graduates to further their education at a college or university. This center will be named for our beloved Ms. Gail Davidson. The center will be technologically advanced so our students and parents can research college and career choices.



Paul Barret, Jr. Sportsplex: The \$1 million Trust given to TRA in 1999 by the Barret Estate was used to further improve TRA's sports facilities. Our goal with monies raised with Phase III of TRA's master plan is to first, construct bathrooms and a concession stand for the 2007 football season, and then at a later time, given the success of this campaign, we would like to install bleachers for the football field, light the baseball and softball fields, and in the future build a field house with locker rooms. Funds raised from the 2006 Advertising Sponsorship Campaign will aid in these endeavors.



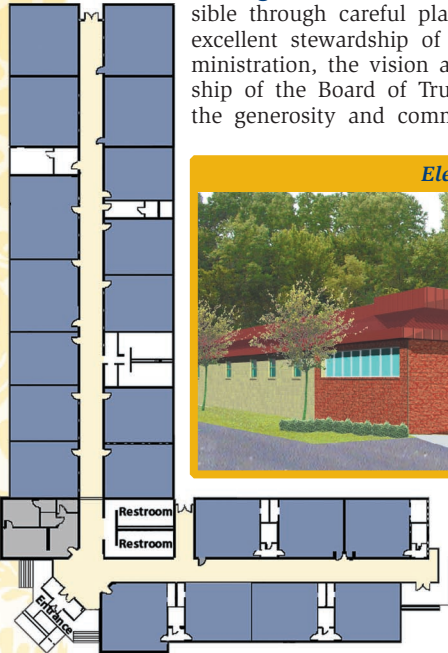
The construction of a new high school and an expansion of our existing elementary school will give Tipton-Rosemark Academy the room to expand its Christian education, firmly establish a major presence in our rapidly-growing community, and continue the momentum created by our new middle school building.

The strategy for funding **Continuing the Tradition** is made possible through careful planning and excellent stewardship of TRA's administration, the vision and leadership of the Board of Trustees, and the generosity and commitment of

our families and friends. The capital funding needed for the construction of our new facilities has been acquired through a tax-free municipal bond issue.

In order to avoid tuition increases solely to pay our debt service payments, the new capital campaign time frame will take place over the next few years. The initial fund-raising goal of the **Continuing the Tradition** campaign will be \$1 million.

Naming opportunities for various parts of the facility are shown in the gift giving period to the right.



Elementary School Expansion



GIFT GIVING OPPORTUNITIES

MONETARY GIFT DESIGNATIONS Facility Naming Opportunities

NAMING OPPORTUNITIES	GIFT AMOUNT	GIFTS NEEDED	SUBTOTAL	CUMULATIVE TOTAL
High School Building	\$250,000	1	\$250,000	\$250,000
Prayer Tower (plans to be developed)	\$100,000			
Gymnasium	\$100,000	3	\$300,000	\$550,000
Football Field	\$100,000			
Cafeteria/Multi-Purpose Rm.	\$75,000	2	\$150,000	\$700,000
Baseball Field	\$75,000			
Courtyard	\$50,000			
Softball Field	\$50,000	3	\$150,000	\$850,000
Library	\$50,000			
Gymnasium Concessions	\$20,000	2	\$40,000	\$890,000
Sportsplex Concessions				
Special Classrooms	\$15,000	4	\$60,000	\$950,000
Classrooms	\$10,000	21		
Bookstore	\$10,000	1	\$230,000	\$1,180,000
Board Conference Room	\$10,000	1		
Offices	\$5,000	4	\$20,000	\$1,200,000
Furnishings	\$3,000	22	\$66,000	\$1,266,000
TOTAL		64		\$1,266,000

CONTINUING *the* TRADITION

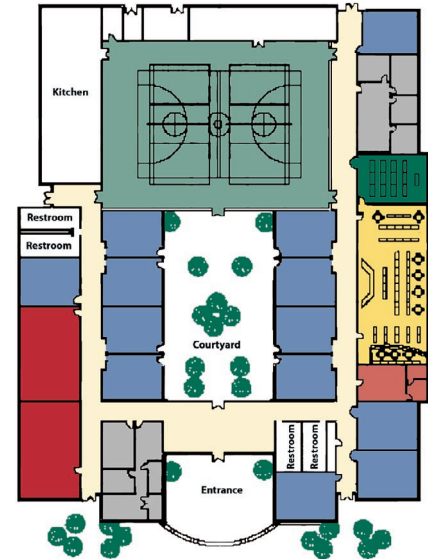
New High School



CAMPAIGN



LEADERSHIP



- Administration
- Classrooms
- Cafeteria/
Multi-Purpose Room
- Science Laboratories
- Technology Center
- Library
- College & Career
Center
- Storage/Other

Board of Trustees
John Scott, Headmaster

Cary Vaughn and Colleen Billings
Campaign Co-Chairs

Lori Regis
Steering Committee Chair

Dax Hughes
Prospect Rating Committee Chair

Moms In Touch
Spiritual Life Committee

John Scott
Major Donor Committee Chair

Carol Hall
Core Donor Committee Chair

Amy Ford
Special Events Committee Chair

Cheryl Seering
Public Relations Committee Chair

Susan Cranford, *Elementary*
Gretchen Goode, *Middle School*
Ann Watson, *High School*
Team Chairs

Marylou McDaniel
Recognition Committee Chair

Brad Williams and Mike Crook
In-Kind Giving Co-Chairs



TIPTON-ROSEMARK ACADEMY
8696 Rosemark Road
Millington, Tennessee 38053

(901) 829-4221

www.tiptonrosemarkacademy.net